

REPORT



Shane Clement
UCLA GEOG XL 7
Unit 9: Geoprocessing and Overlay
Analysis: Policy Analysis Case Study
March 13, 2021



Clement Geospatial

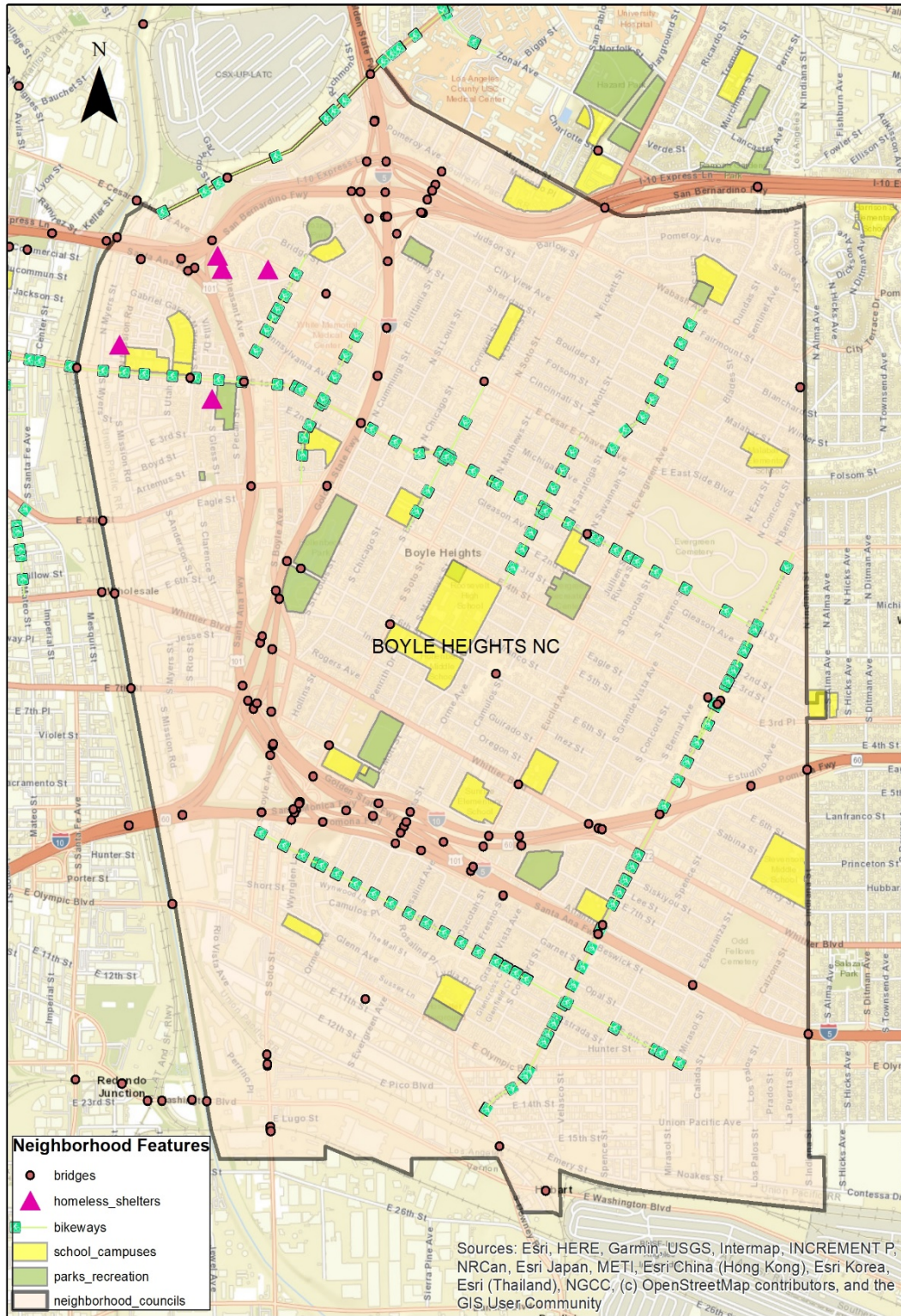
Policy Analysis: The Impact of Buffer Zones in Boyle Heights, Los Angeles, California

Los Angeles County has been dealing with a housing shortage crisis over the past decade due to the rising costs of housing, increasing wage disparities, and lack of mental health services. The county needs over 500,000 units of affordable housing to meet demand and alleviate the growing problem. In 2016, the city of Los Angeles voters passes a measure that would allocate a \$1.2 billion fund for affordable housing. The city has since worked to expand the program by purchasing affordable housing buildings and real estate to keep rents low and assist low-income families with housing needs.

As the city works through the obstacles of meeting the rising need for affordable housing, the question has become what to do about the thousands of homeless people that are sleeping on the streets and in tent encampments sprawled around the city. There is a struggle among citizens that are concerns about the public health and safety issues while protecting the rights of the homeless population. To address these concerns, The City Council on Homeless and Poverty proposed to restrict homeless people from sleeping within 500 feet of parks, schools and daycares, bridges and underpasses on school routes, crowded public sidewalks near large venues, and bike paths. Advocates for the homeless population say this will make it confusing to know where they can sleep and basically, criminalize homelessness.

Boyle Heights is one of the neighborhood councils that would be significantly impacted by restrictions created by the 500 feet buffer zones. The neighborhood consists of 6 square miles with a homeless population of approximately 7600 individuals shared with downtown Los Angeles and North East Los Angeles. Boyle Heights features include 21 schools, 13 parks, over 1900 bridges, and 6 homeless shelters. Combining the buffer zones of all these features totals to 3.7 square miles creating a 60% reduction in available land for the homeless population to sleep and camp.

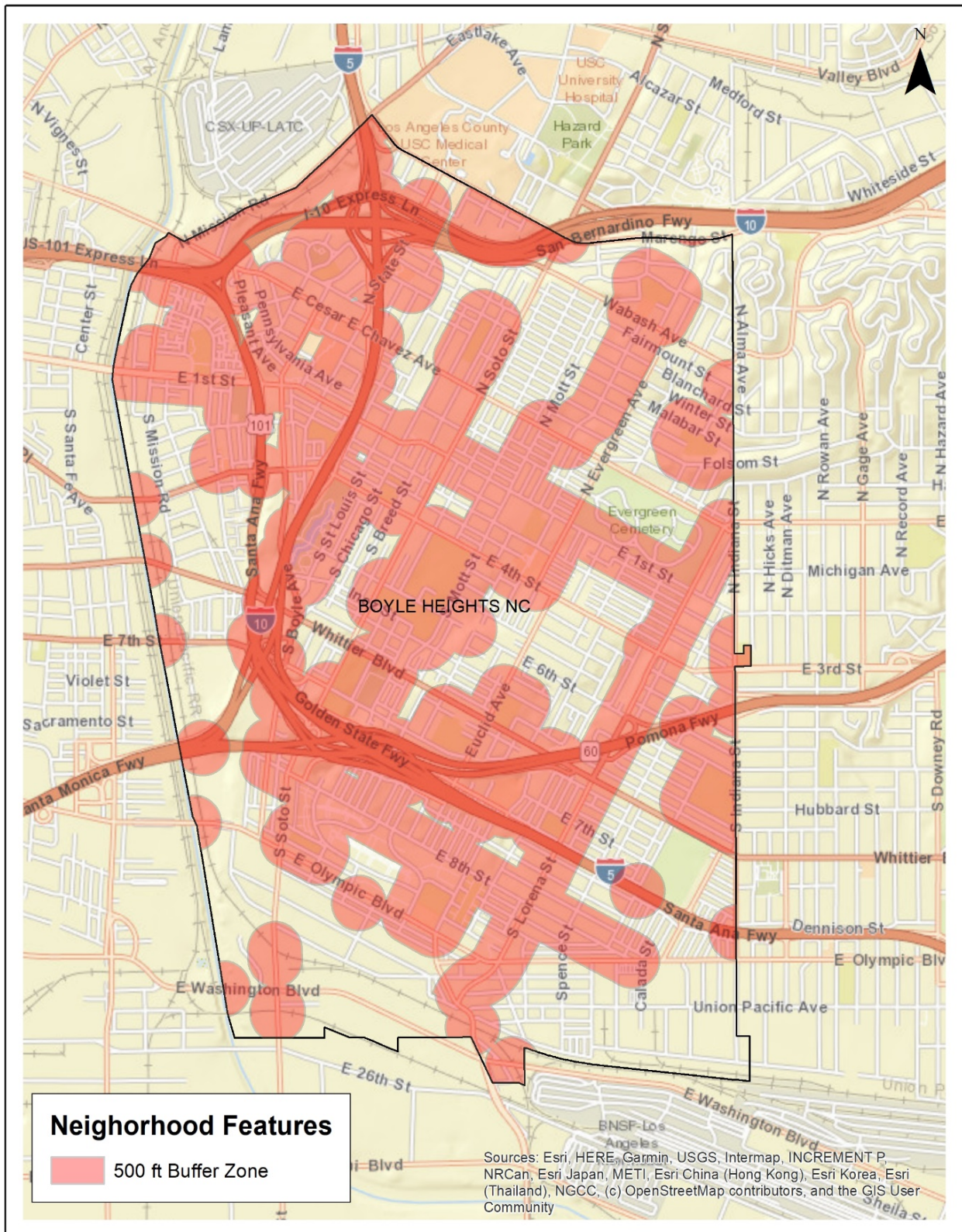
Boyle Heights Neighborhood Features



0 0.25 0.5 1 Miles
1:26,000

Cartography by Shane Clement

Boyle Heights Homeless Buffer Zones



Cartography by Shane Clement

0 0.25 0.5 1 Miles

1:28,000

The Impacts of Homeless Restrictions

BOYLE HEIGHTS LOS ANGELES, CA

Land Area

Square Miles = 6

Proposed Impacted Area = 3.7 Miles

Reduction in available space **60%**

Number of Homeless Shelters



Total Acreage of Parks

57

21 Schools in the area